

LF120 Control lever



Single or double operation of propulsion machinery/tunnel thruster.

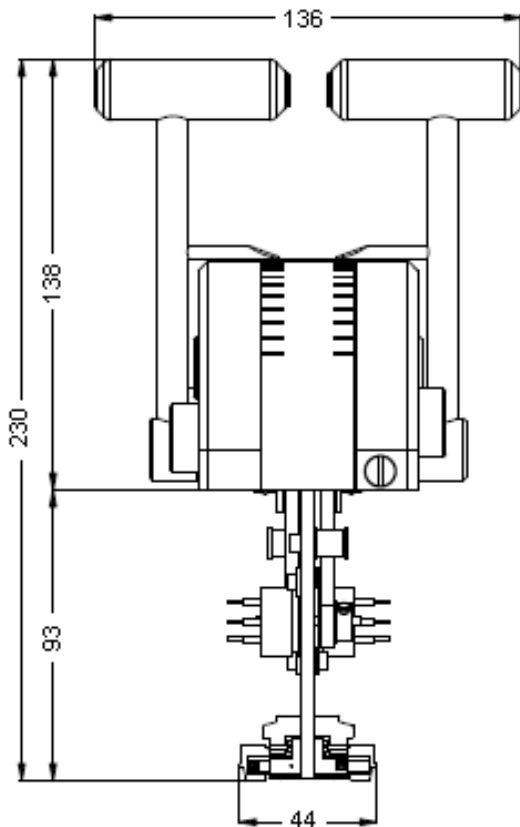
LF120 is designed for single or double operation propulsion machinery, but is also used for tunnel thruster operation. A robust controller that is established as one of the most reliable maritime control levers on the market.

The standard lever may be modified according to customer's requirements, such as panel plate, different scales, straight or curved shafts (standard Lilaas propulsion control = straight shafts), different handles, potentiometers, detents and switch operation.

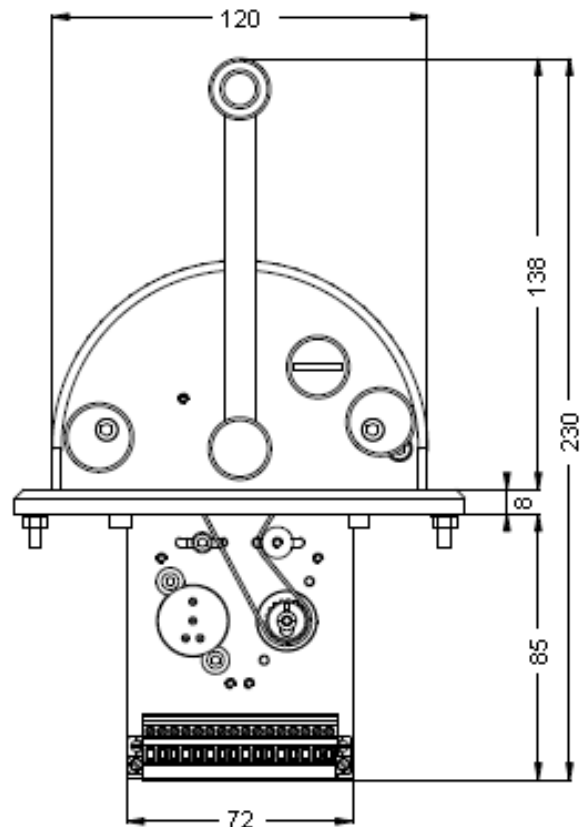
Note: Separate product sheets for motorized versions of LF120

Control lever LF120

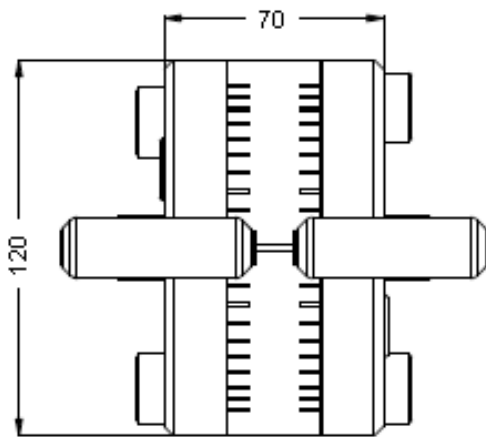
Outline sketch also valid for single lever (only one handle and one set of mechanical parts below panel plate)



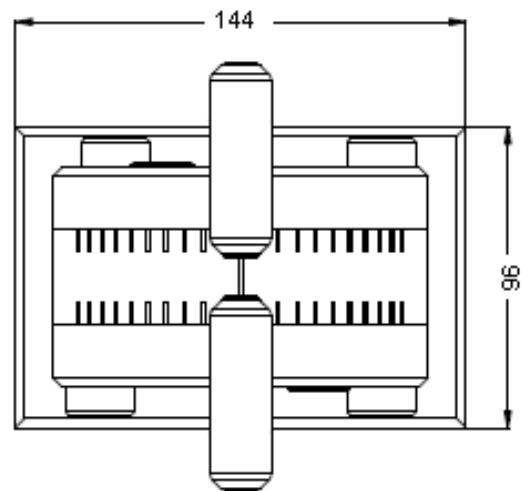
Front view



Side view with panel plate



Top view



Top view with panel plate

Technical description, standard

Side covers: Black coated aluminium
 Shaft: Dull surface, stainless steel
 Handle: Dull surface, POM
 Scale: Self adhesive on acrylic bow
 Standard scale light: 24 volts bulb
 Standard potmeter: 5 K
 Potmeter operation: Tooth belt
 Standard termination: 16 pins contact with plug
 Enclosure: IP66 w/panel plate

Tested according to **IEC/EN 60945** and **IACS E10**
 (ABS, BV, CCS, DNV, GL, KR, LR, NK, PRS, RS, RINA, CRS).
Certification: DNV, CRS.

Options, single and double

Spring-loaded return to neutral position
 Built-in switches
 Detents .limited deflection
 Various handles and shafts
 Panel plate 96x144 mm
 Motorized (see separate product sheet)
 A range of scale foils, thruster or propulsion
 Integrated scale light
 Other options on request